

Tree Canopy, Neighborhood Planting and Its Impact



Center For Neighborhoods

2016 Neighborhood Summit
Strong Leaders, Strong Community



Today's Workshop Goals:

- Learn from community experts and leaders
- Connect with each other on issues that matter to us
- Come away with viable action steps

Moderator

Maria Koetter



Director of
Sustainability



Workshop Speakers

Erin Thompson



Urban Forester



Cindi Sullivan

Executive Director
TreesLouisville



June 4, 2016

Erin Thompson



Urban Forester

Division of Community Forestry



Importance of Trees and the Louisville Tree Canopy Assessment

June 4, 2016

WHY TREES?

Impacts:

Environmentally

Economically

Socially



WHY TREES?

Impacts:

Environmentally

Economically

Socially



June 4, 2016

WHY TREES?

Impacts:

Environmentally

Economically

Socially



June 4, 2016

WHY TREES?

Impacts:

Environmentally

Economically

Socially



June 4, 2016

A CALL TO ACTION

A Changing Louisville



Pest



June 2006



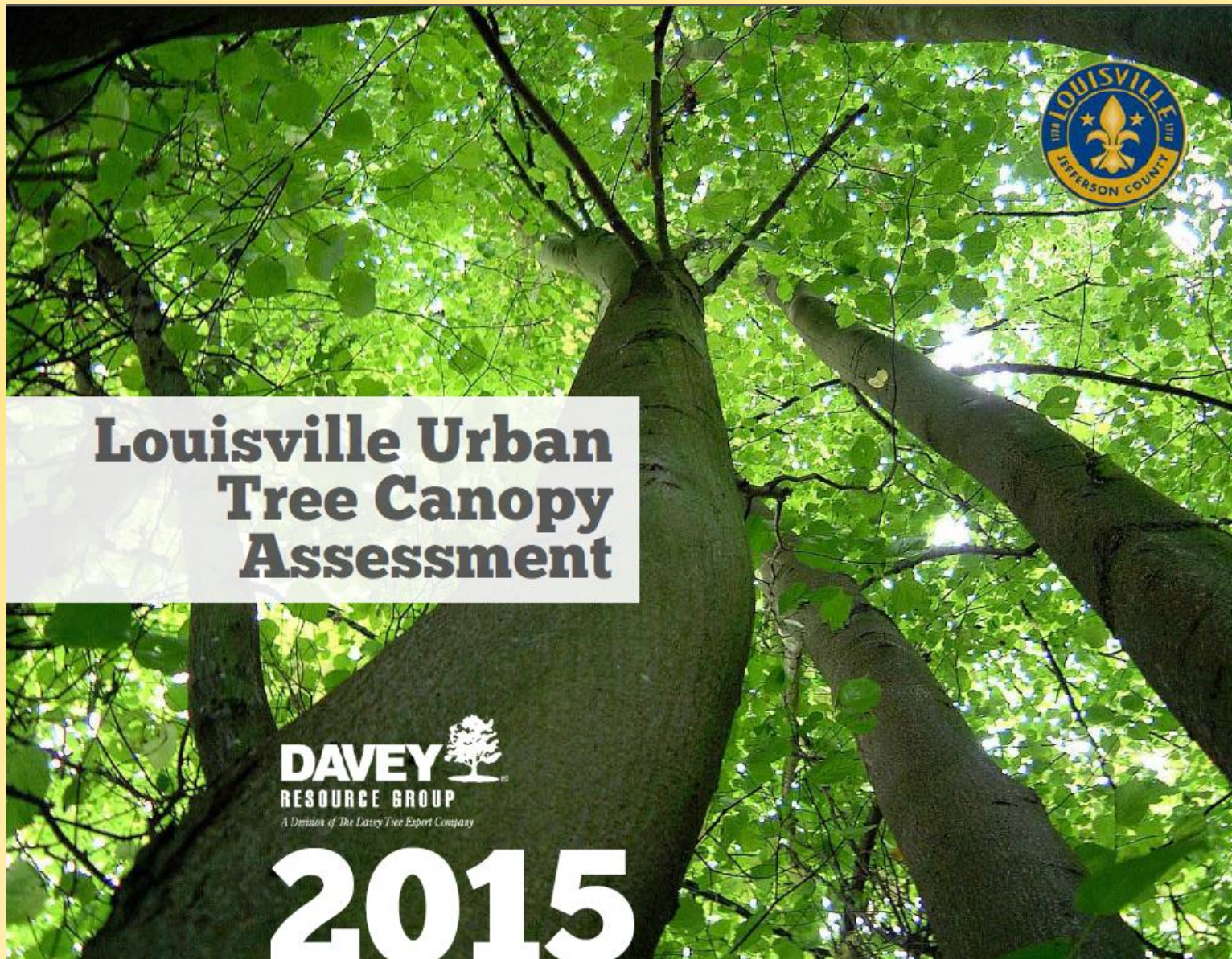
August 2009

June 4, 2016

A CALL TO ACTION



June 4, 2016



Provides:

Canopy Change

Landcover Classification

Canopy by:

- Louisville/Jefferson County
- Suburban City's
- Council Districts
- Neighborhoods
- Land Use

Ecosystem Health/Benefits

Stormwater Management

Ownership

Prioritize Plantings

June 4, 2016

2015 Urban Tree Canopy Assessment

40% **→** **38%** **→** **37%**
2004 **2008** **2012**

3% decrease of canopy over eight years =

Loss of 6,500 acres of tree canopy =

Loss of 820 acres of tree per year

or

54,000 trees per year

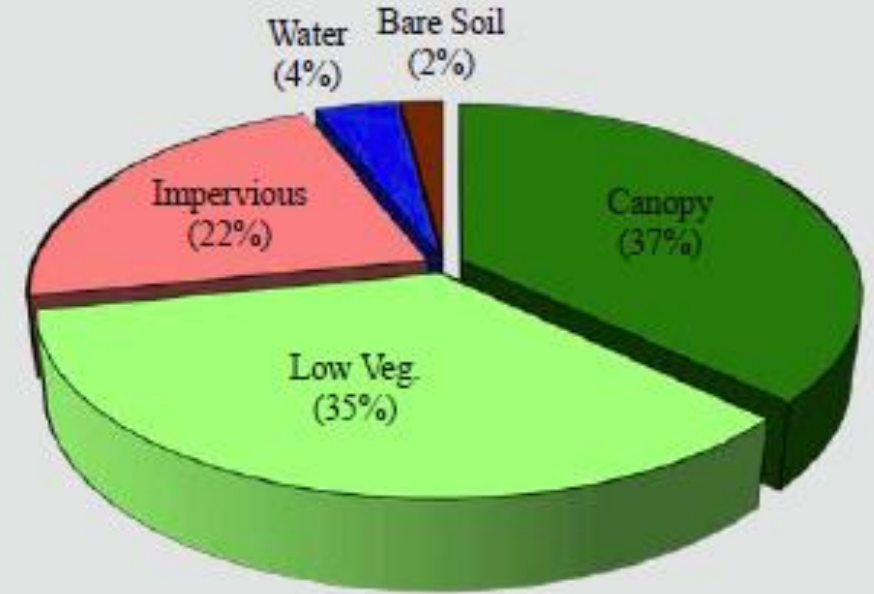
Landcover



- Tree Canopy – 37%**
Trees' leaf-covered branches, as seen from above.
- Grass/Low Vegetation– 35%**
Parks, golf courses, fields, lawns.
- Water – 4%**
All bodies of water including lakes, ponds, rivers and streams.

- Impervious Surfaces –22%**
Roads, sidewalks, buildings, parking lots - all areas where water cannot soak into the ground.
- Bare Soil – 2%**
All open areas like sports fields, vacant lots, and construction sites.

Figure 3. Louisville 2012 Land Cover



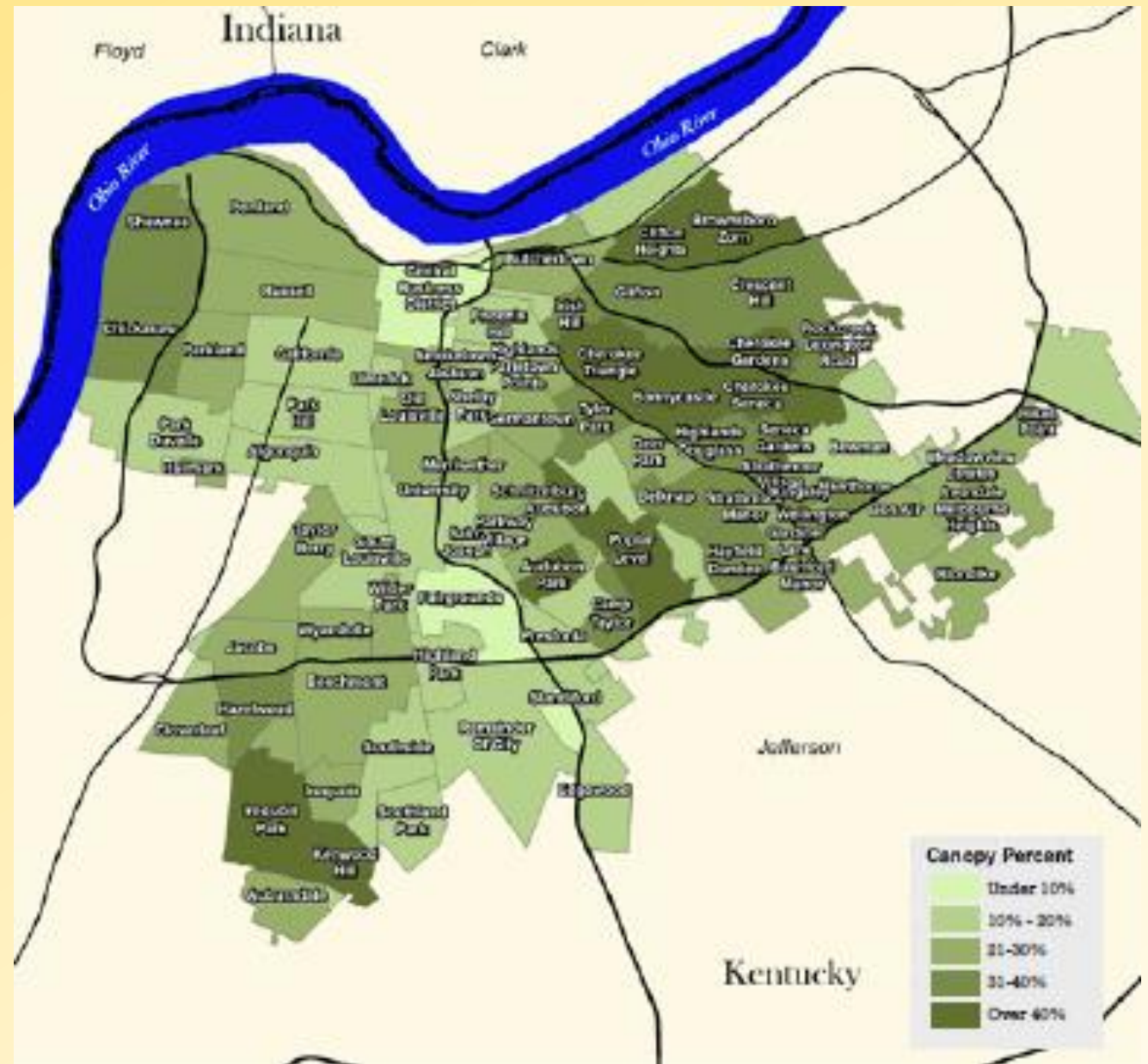
Center For Neighborhoods

2016 Neighborhood Summit
Strong Leaders, Strong Community

Canopy by Neighborhood

	Neighborhood	Canopy %
Highest	Iroquois Park	68%
	Cherokee Seneca	55%
	Cherokee Gardens	53%
	Brownsboro Zorn	51%
	Audubon Park	48%

	Neighborhood	Canopy %
Lowest	University	11%
	Phoenix Hill	11%
	Central Bus. District	8%
	Fairgrounds	6%
	Standiford	3%



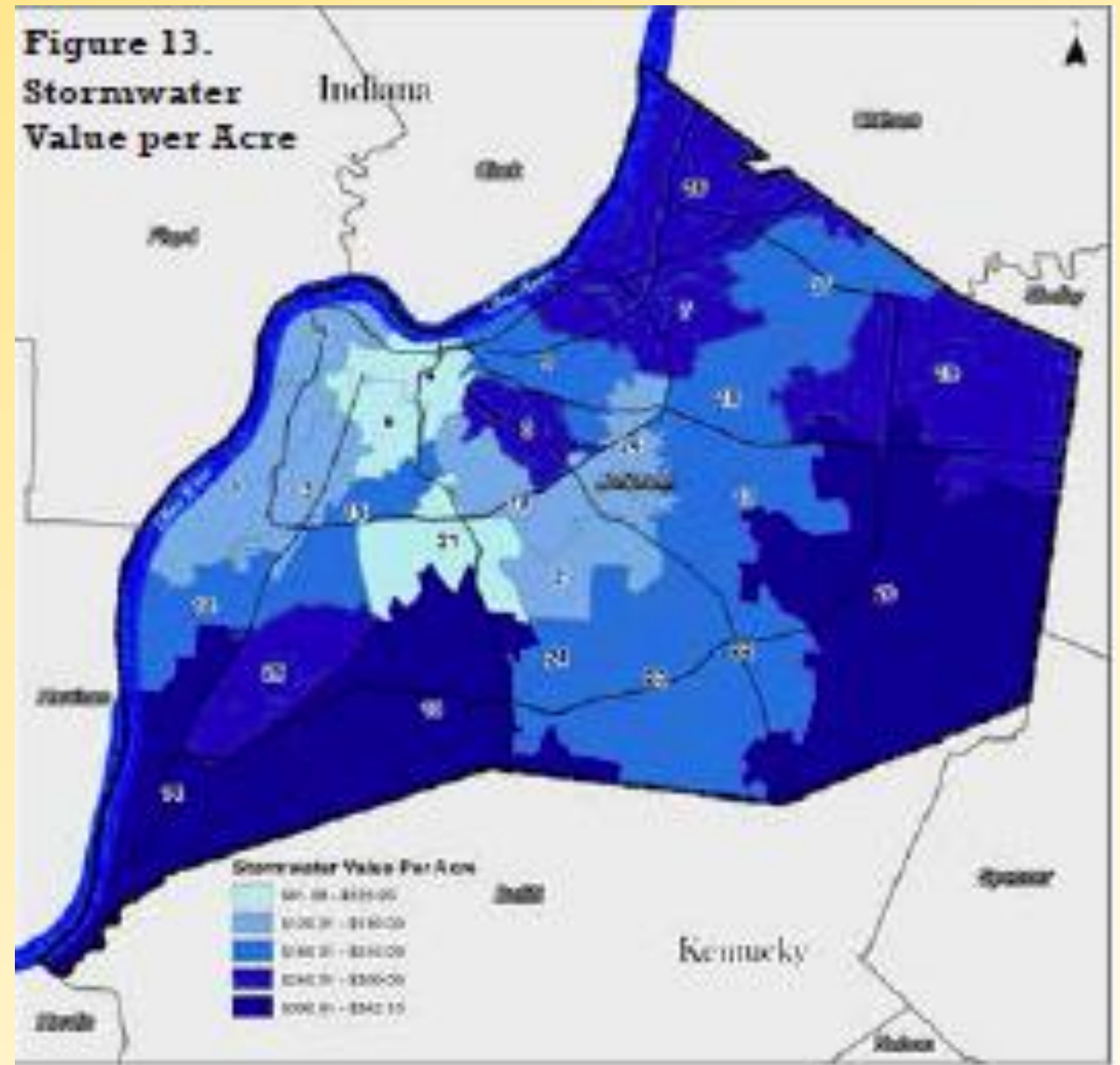
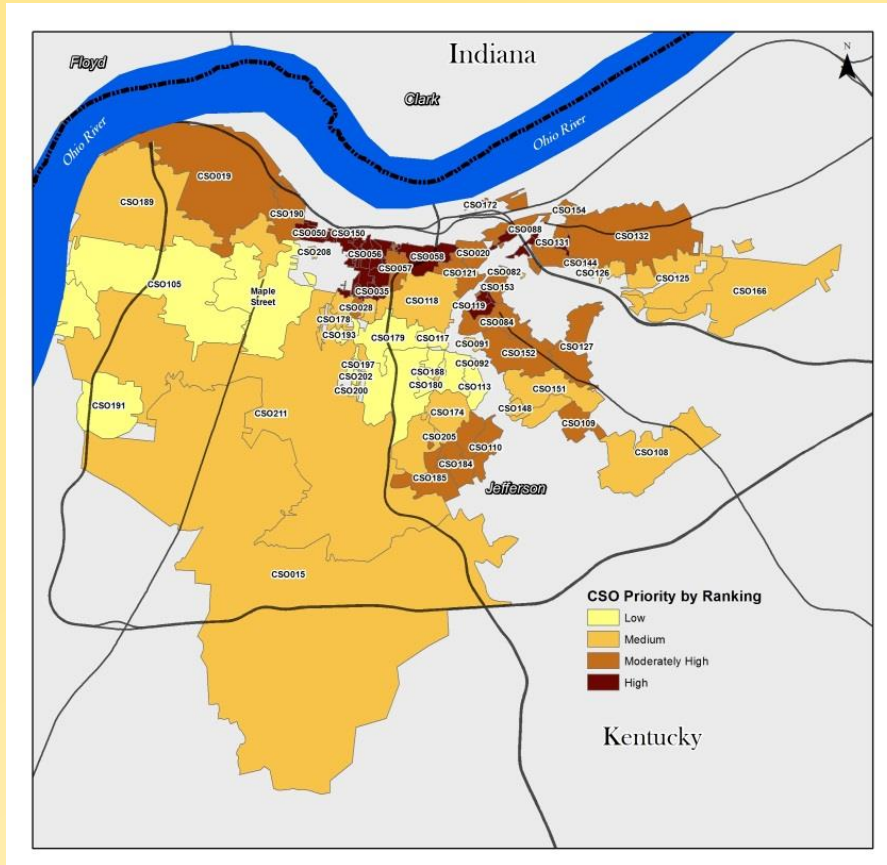
Center For Neighborhoods

2016 Neighborhood Summit
Strong Leaders, Strong Community

Ecosystem Benefits

Louisville's Tree Benefits (from 2012 Canopy)			
	Quantity	Unit	Value
STORMWATER: Runoff Reduction	18,835,266,390	gallons	\$62,909,790
ENERGY: Savings from Avoided Cooling	67,649,325	kWhs	\$5,463,356
PROPERTY: Increases in Property Values	-	\$	\$239,969,791
AIR: Carbon Monoxide (CO) Removed	149,120	lbs.	\$99,078
AIR: Nitrogen Dioxide (NO ₂) Removed	517,780	lbs.	\$219,678
AIR: Ozone (O ₃) Removed	4,366,940	lbs.	\$7,932,540
AIR: Sulfur Dioxide (SO ₂) Removed	622,280	lbs.	\$78,727
AIR: Dust, Soot, Other Particles Removed (Particulate Matter, PM ₁₀)	1,242,280	lbs.	\$3,879,821
Carbon Sequestered	444,112	tons	\$8,599,490
	Total Annual Benefits		\$329,152,271
Carbon Storage over Canopy's Lifetime (not an annual benefit)	11,941,333	tons	\$231,224,066
	Total Benefits Overall		\$560,376,337

Stormwater Management



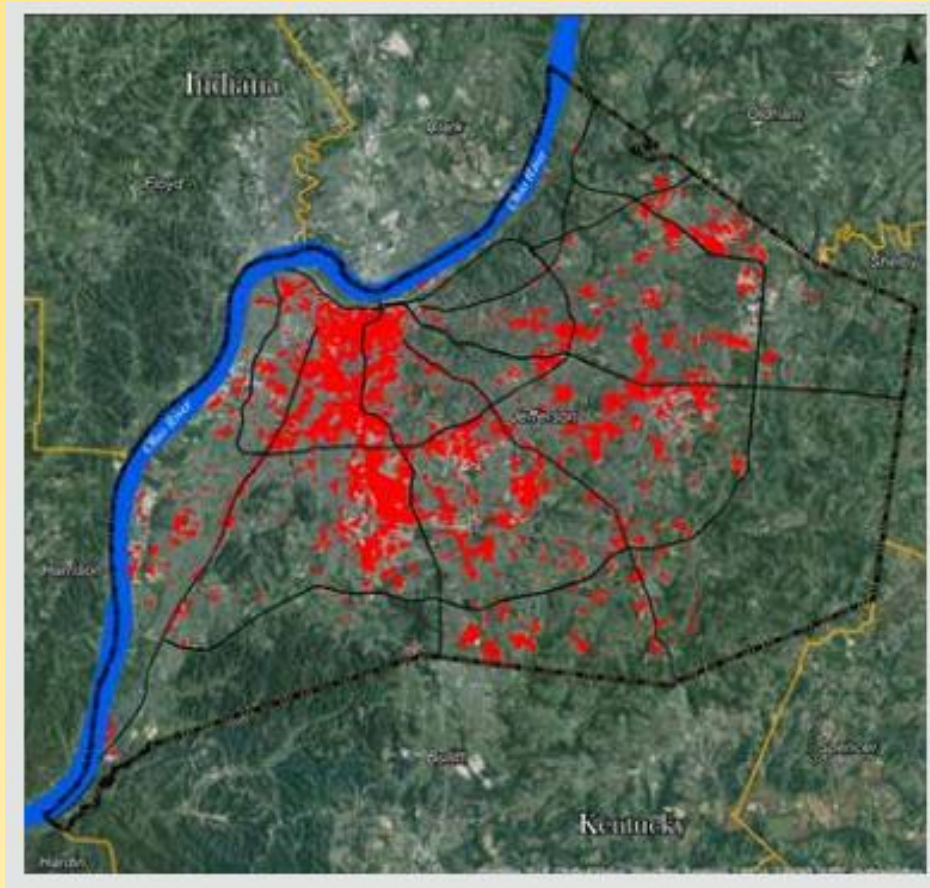
Center For Neighborhoods

2016 Neighborhood Summit
Strong Leaders, Strong Community

Ownership

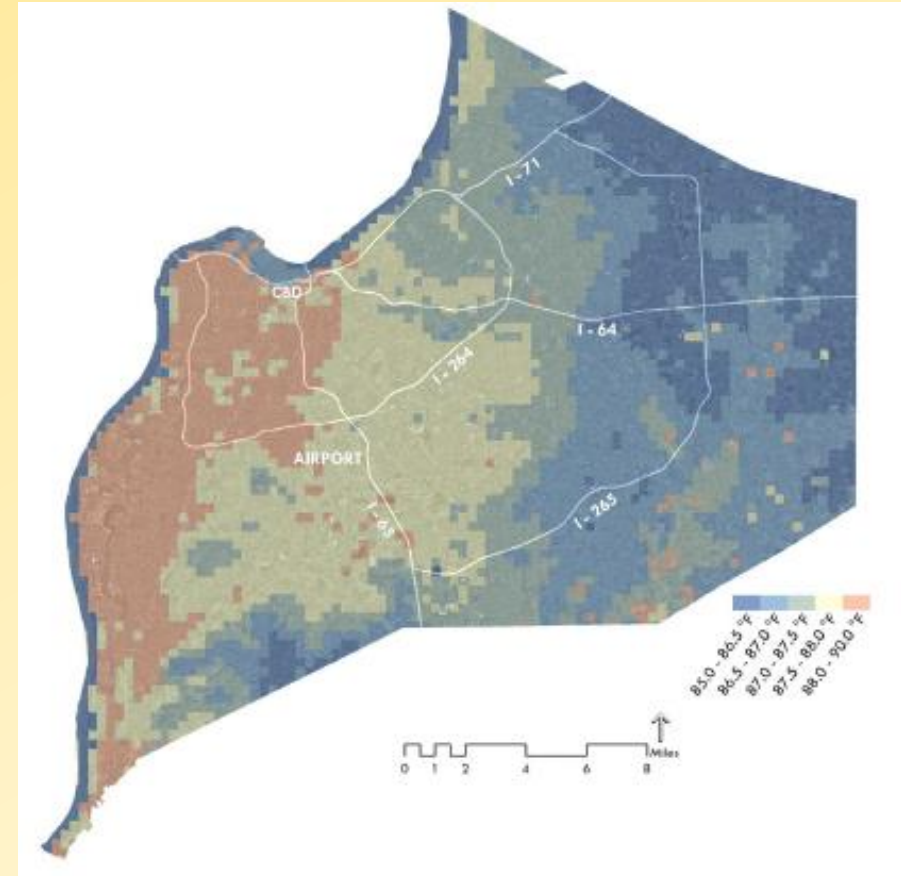
	Total Acreage	Privately-Owned		Publically-Owned	
		Size (Acres)	% of Total	Size (Acres)	% of Total
Louisville Land	246,416	172,081	70%	74,335	30%
Existing Canopy	94,106	67,684	72%	26,422	28%
RPAs	65,848	47,811	73%	18,036	27%

Heat Island



2015 UTC—Surface Temperature

By Davey Resource Group



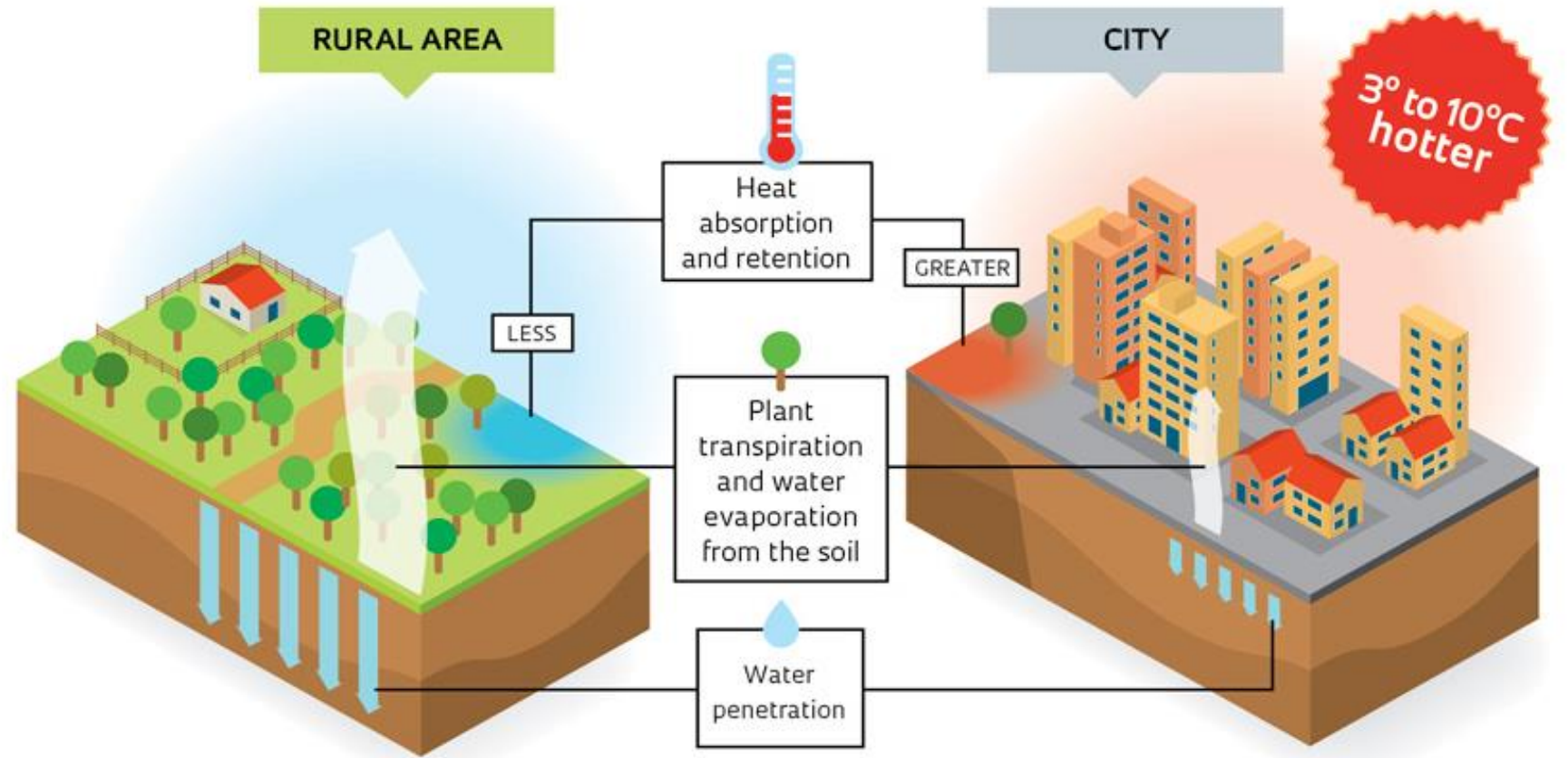
2016 UHMS---Highest Ambient Temperatures

By Urban Climate Lab at GA Institute of Technology

June 4, 2016

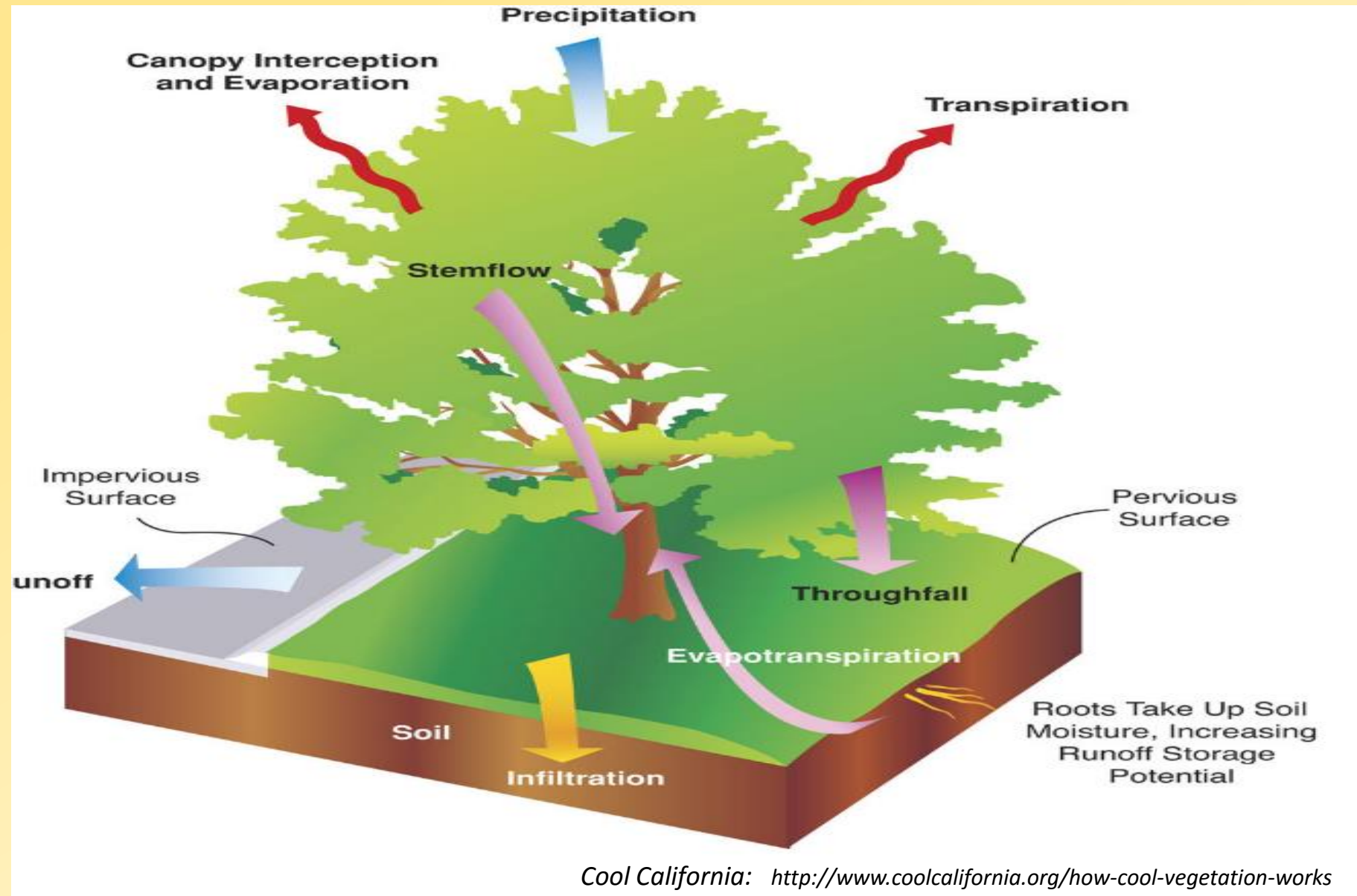
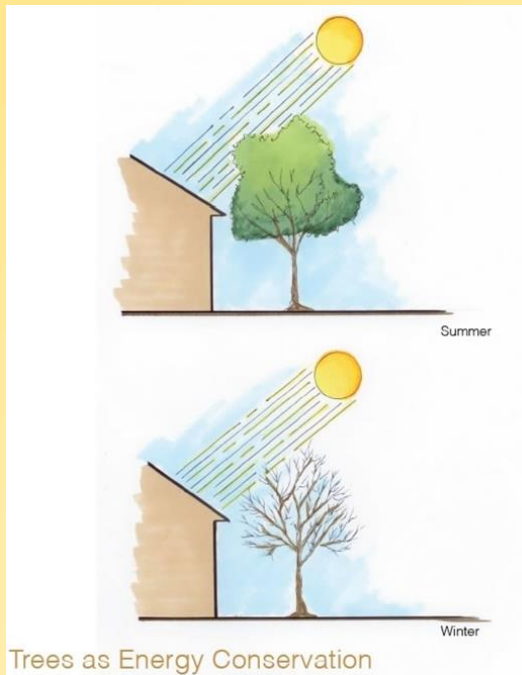
Heat Island

Why the urban heat island effect occurs



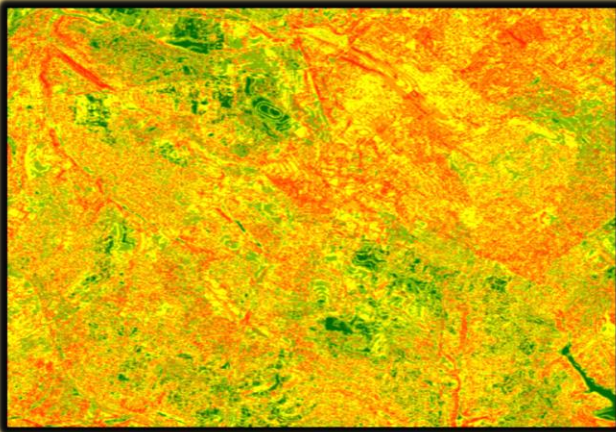
Green Dallas: <http://greendallas.net/land/challenges/>

Heat Island



Prioritized Plantings

Prioritization Results



Preferred Planting Sites

Planting Site Priority Level



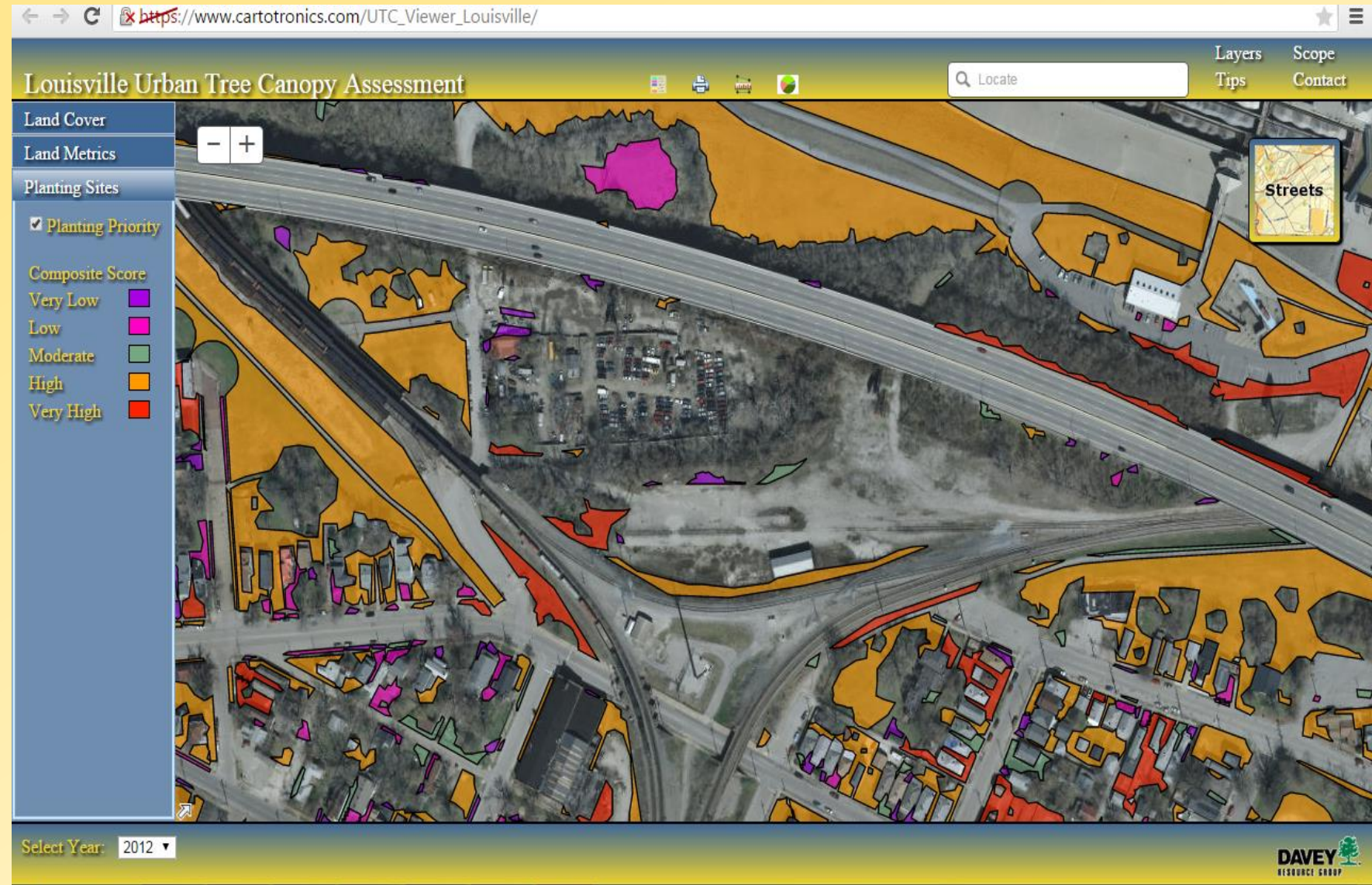
*Sites are ranked using the average risk value for each polygon.



Center For Neighborhoods

2016 Neighborhood Summit
Strong Leaders, Strong Community

Webviewer



2015 Urban Tree Canopy Assessment



3% decrease of canopy over eight years =
Loss of 6,500 acres of tree canopy =
Loss of 820 acres of tree per year
or
54,000 trees per year

Increase by 8%
Need to plant =
2.5 to 3.5 million
trees

Cindi Sullivan

Executive Director
TreesLouisville



Neighborhood Impact and Planning

June 4, 2016

Want more trees in your neighborhood?

- Get Organized!
- Form a Tree Committee
- Locate Resources
- Plant trees!



June 4th, 2016

Re-Tree Shively



4 June 2016

Re-tree Shively



Saint Regis Park



Saint Regis Park

- Set out to become a Tree City USA
- Created Ordinance
- Established Tree Board
- Created Budget
- Planted Trees!



Seneca Gardens- A Neighborhood Arboretum



Diversity



Fall color





Center For Neighborhoods

2016 Neighborhood Summit
Strong Leaders, Strong Community

Winter Interest





Conclusion

- Organization and teamwork is the key
 - Form committees
 - Locate resources
 - Other communities
 - Metro Council
 - MSD
 - Other Grant Opportunities
- Create Happier, Healthier Communities
- Get planting!

Questions / Discussion

June 4, 2016

Made possible through our sponsors . . .



BROWN-FORMAN



INSTITUTE FOR HEALTHY
AIR WATER & SOIL



June 4, 2016