



Center For Neighborhoods

VISION. KNOWLEDGE. ACTION.



Week 4

Neighborhood Institute Spring 2020

Welcome to Week 4

Housekeeping

Homework

Understanding Your City

Ideal Neighborhood Exercise

Project Introduction

Wrap-Up



Review: Asset Based Community Development (ABCD)



Six Asset Areas



Review: Three Challenges

Interview a neighbor?

Community Toolbox?

What LMPD Division do you live in?





Understanding Your City: How to assess your neighborhood!

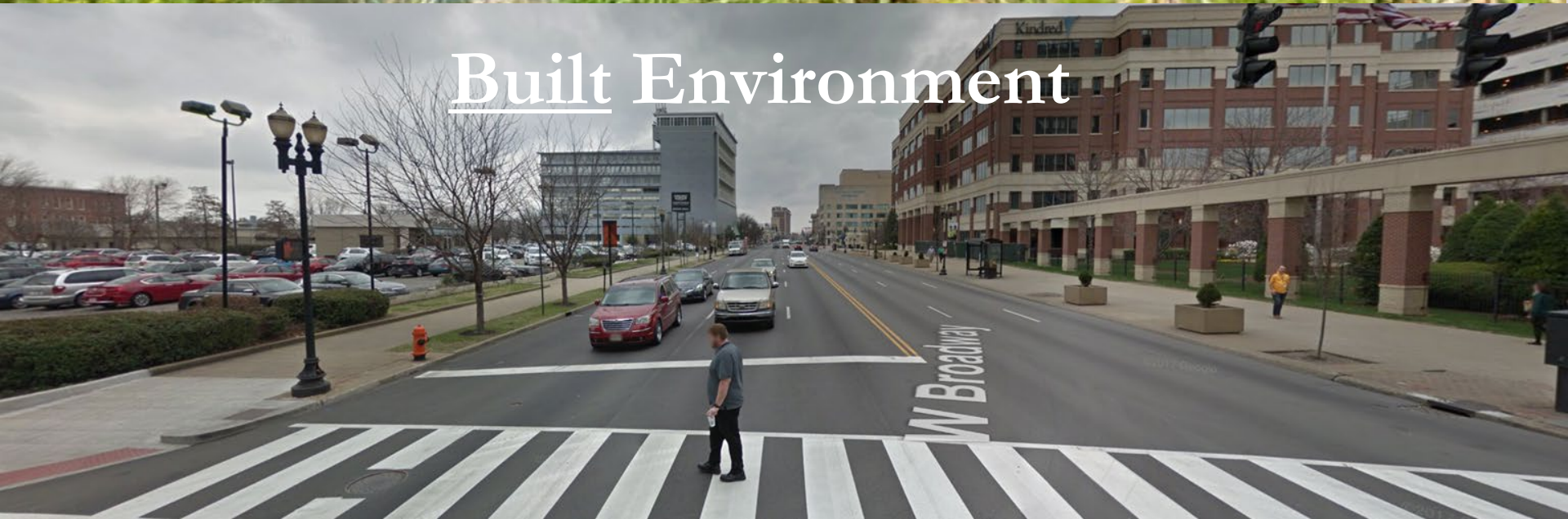
1. Laying the foundation:
key concepts & terminology

2. Application:
Questions to ask
when out in your
neighborhood

3. Examples!

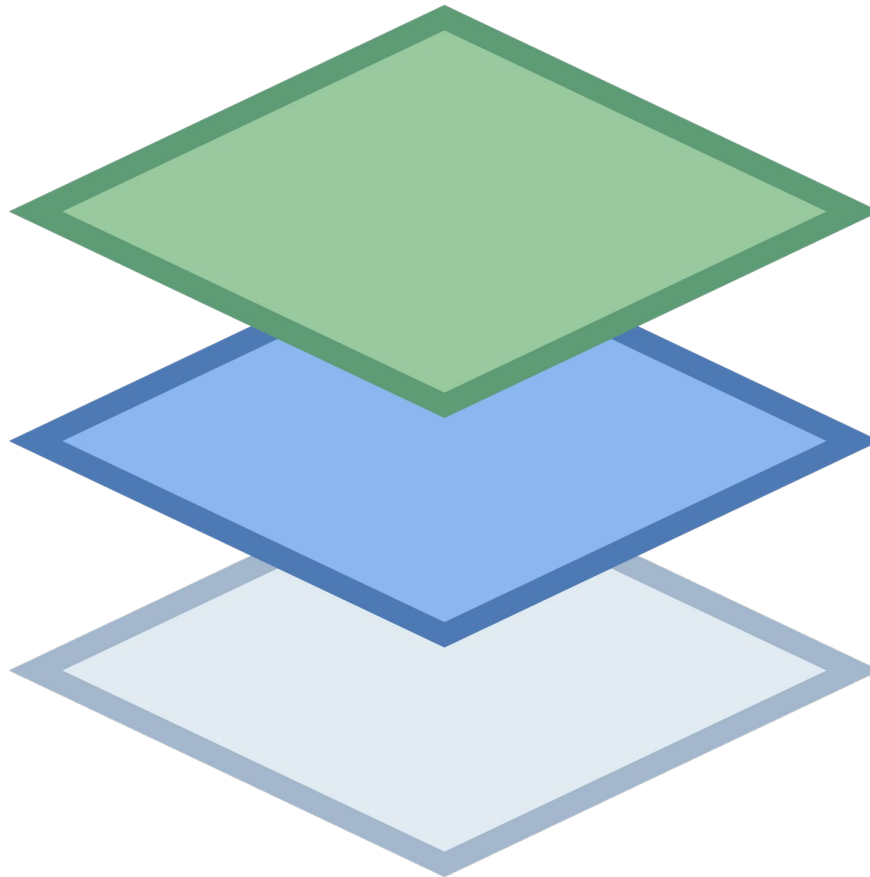


Natural Environment



Built Environment

Local Regulatory Framework



Neighborhood/Area Plans

Comprehensive Plan

Land Development Code

Development Proposals

Planning Commission

Board of Zoning Adjustment

<https://louisvilleky.gov/government/advanced-planning/plans-and-studies>

Built Environment Terminology



EDGE



LANDMARK



DISTRICT



NODE



Built Environment Terminology



ZONING

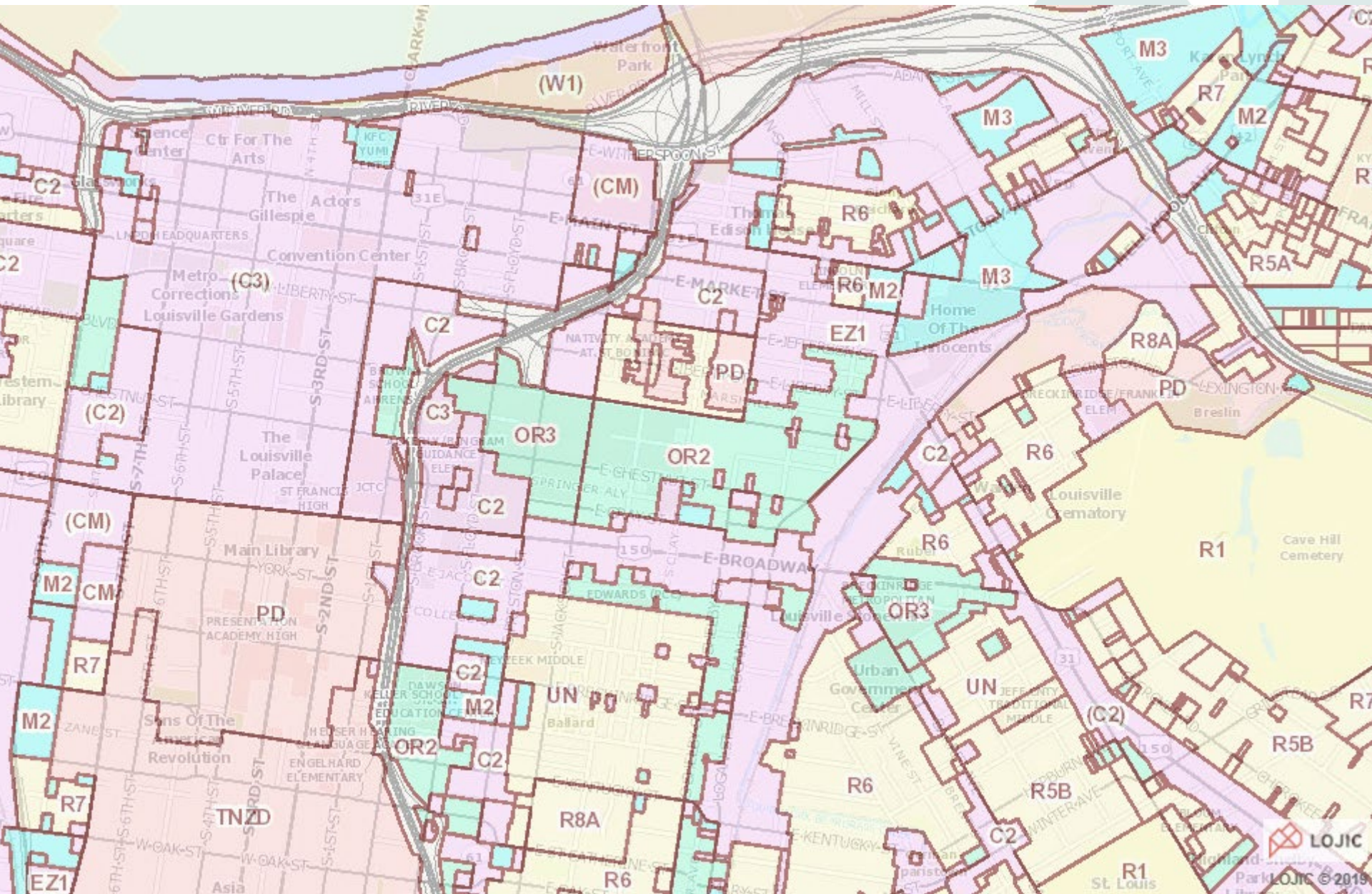
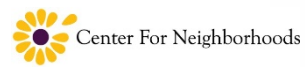
Regulation

USE

What

DENSITY

How much



Why Assess Your Neighborhood?

- Understanding Existing Conditions
- Engagement Opportunity
- Address Concerns
- Basis for a plan of action



Five Physical Features



**Homes &
Gardens**



Institutions



**Neighborhood
Niches**



Streets



**Public
Space**

Five Organizing Themes



Location



Mix



Scale

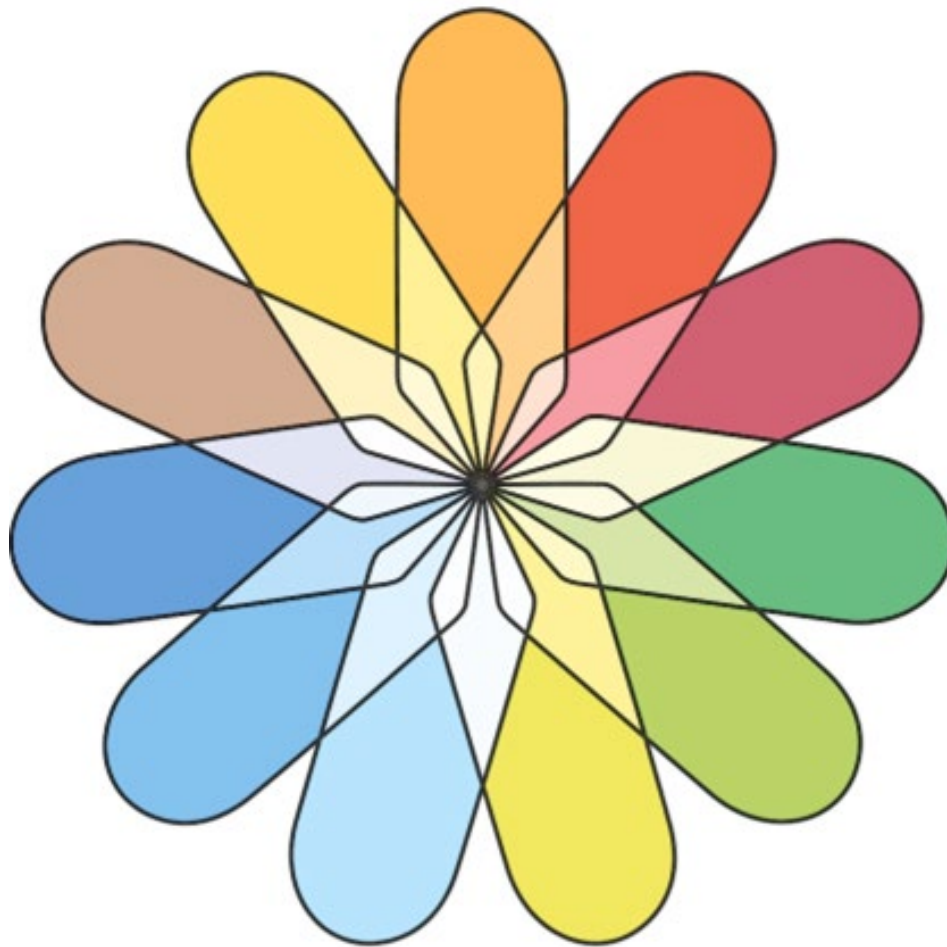


Time



Movement

Quality of Life



-  Income & Jobs
-  Housing Conditions
-  Health
-  Education
-  Environmental Quality
-  Personal Security
-  Civic Engagement
-  Work-Life Balance
-  Infrastructure & Services
-  Mobility
-  Culture & Leisure

Study

Histories

Maps

Images

Data

Observe

Walk & Sit

Photo/Draw

Measure

Visit

Ask

Residents

Visitors

Business

Institutions

How do you read the street?



How does perspective change your assessment?



Which one is the greater landmark?



What are the uses? Where's the edge?



Where's the path?



Where's the path?



Dangerous by Design: National Report

<https://smartgrowthamerica.org/dangerous-by-design/>



Dangerous by Design, continued...



Now, how do you apply these concepts to read this block?



Use Your Head, Hands, and Heart to ASK & LISTEN

Tools & Tips:

Public School Teachers

Conversations, Surveys

Civic, Faith and Business Leaders

One on Ones, Community Tours

Police Ride Along

Division Resource Officers

Residents . . . your neighbors!

Conversations, Surveys



Use Your Head, Hands, and Heart to STUDY

Resources:

Demographic Analysis

US Census, American Community Survey

<https://factfinder.census.gov/faces/nav/jsf/pages/index.xhtml>

Neighborhood Histories

Encyclopedia of Louisville, UofL Archives, Filson

<https://library.louisville.edu/archives/home>

Case Studies-Best Practices

American Planning Association – Great Places Designation

<https://planning.org/greatplaces/>

More coming in Week 6!

LOJIC, PVA, Secretary of State, Open Street Maps and more....



Use Your Head, Hands, and Heart to STUDY

Existing Louisville Reports:

Health Equity Report

Center For Health Equity at Louisville Metro Public Health and Wellness

<https://louisvilleky.gov/government/center-health-equity/health-equity-report>

State of Housing Report

Metropolitan Housing Coalition

<http://www.metropolitanhousing.org/resources/mhc-reports/>

Neighborhood Profiles

Metro United Way / Kentucky State Data Center

http://ksdc.louisville.edu/research/sponsored_projects/louisville-neighborhood-profiles/

Using Your Head, Hands, and Heart to OBSERVE

Go on a walk! (Photo Safari)

Walk, snap, gather & report

<https://motheringmatters.ch/craft-neighborhood-map/>



Windshield/Walking Survey

<http://ctb.ku.edu/en/table-of-contents Chapter 3>



Walking Audit

http://www.pedbikeinfo.org/planning/tools_audits.cfm



Pedestrian and Bicycle Information Center

Data & Resources Community Support Planning & Design Training & Events Programs & Campaigns

Asset Mapping

Talk to us!

Quality of Life Assessment Tools

Food, Services, Parks, Traffic, etc.

Neighborhood Food Accessibility: Fill out for each food vendor

Neighborhood Name: _____ Neighborhood ID: _____
Name of Vendor: _____ Accepts: ___ W/C ___ SNAP

Type (check all that apply):

- ☐ Deli ☐ Dollar Store ☐ Local Sit-Down Restaurant
- ☐ Coffee Shop ☐ Pharmacy ☐ Fast Food Restaurant
- ☐ Bakery ☐ Liquor Store ☐ Chain Sit-Down Restaurant
- ☐ Juice Bar ☐ Bar ☐ Taqueria/ Mobile Stand
- ☐ Grocery Store/ Super Center ☐ Small Grocery/Market/Convenience Store (w/ Gas Station)
- ☐ Small Grocery/Market/Convenience Store (w/o Gas Station)

Accessibility (Circle One):

Bike Rack Y N Sidewalk Y N
Bike Route Y N Bus Route Y N
Adequate Lighting Y N

Legend:

Visibility	Frequency	Variety	Quality
0 - not visible	0 - none	0 - no	0 - poor
1 - visible	1 - infrequent	1 - some	1 - adequate
2 - very visible	2 - frequent	2 - a lot	2 - good

Local Food Vendors have the following:	Visible? (0,1,2)	Frequent? (0,1,2)	Variety? (0,1,2)	Quality? (0,1,2)	Comments/ Examples
1. Fruits & vegetables					
2. Low fat products (dairy, snacks, meat)					
3. Whole grain products					
4. Low sugar products					
5. Price incentives for healthy items					
6. Promotional displays & signage to help people buy healthy food					
7. Healthy food products are located at adult/child eye level			Y	N	

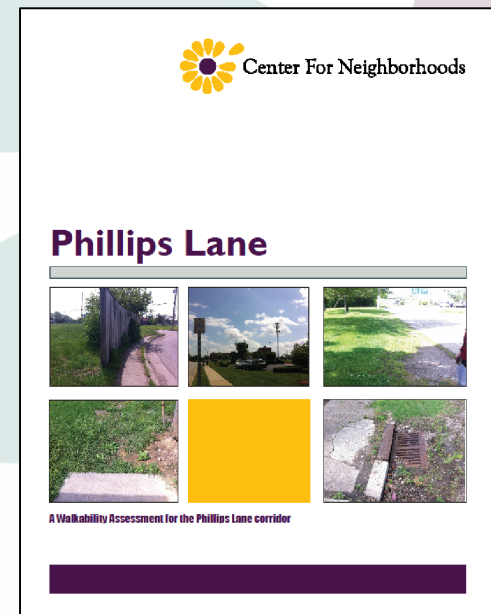
More Resources for STUDY and OBSERVE:

Neighborhood Assessments

<https://www.centerforneighborhoods.org/neighborhood-assessments>

Walkability Assessments

https://docs.wixstatic.com/ugd/c8c661_4b93d668bd0b47dda85135bf0d79733e.pdf



Additional reading for nerds

On Looking: A walker's guide to the art of observation - Alexandra Horowitz

The Image of the City - Kevin Lynch

How to Read the American City - Grady Clay

The Death & Life of Great American Cities - Jane Jacobs

Planning To Stay – William Morrish, Catherine Brown

Neighbors and Neighborhoods - Sidney Brower

- **Movie: “Citizen Jane: Battle for the City”**

Break

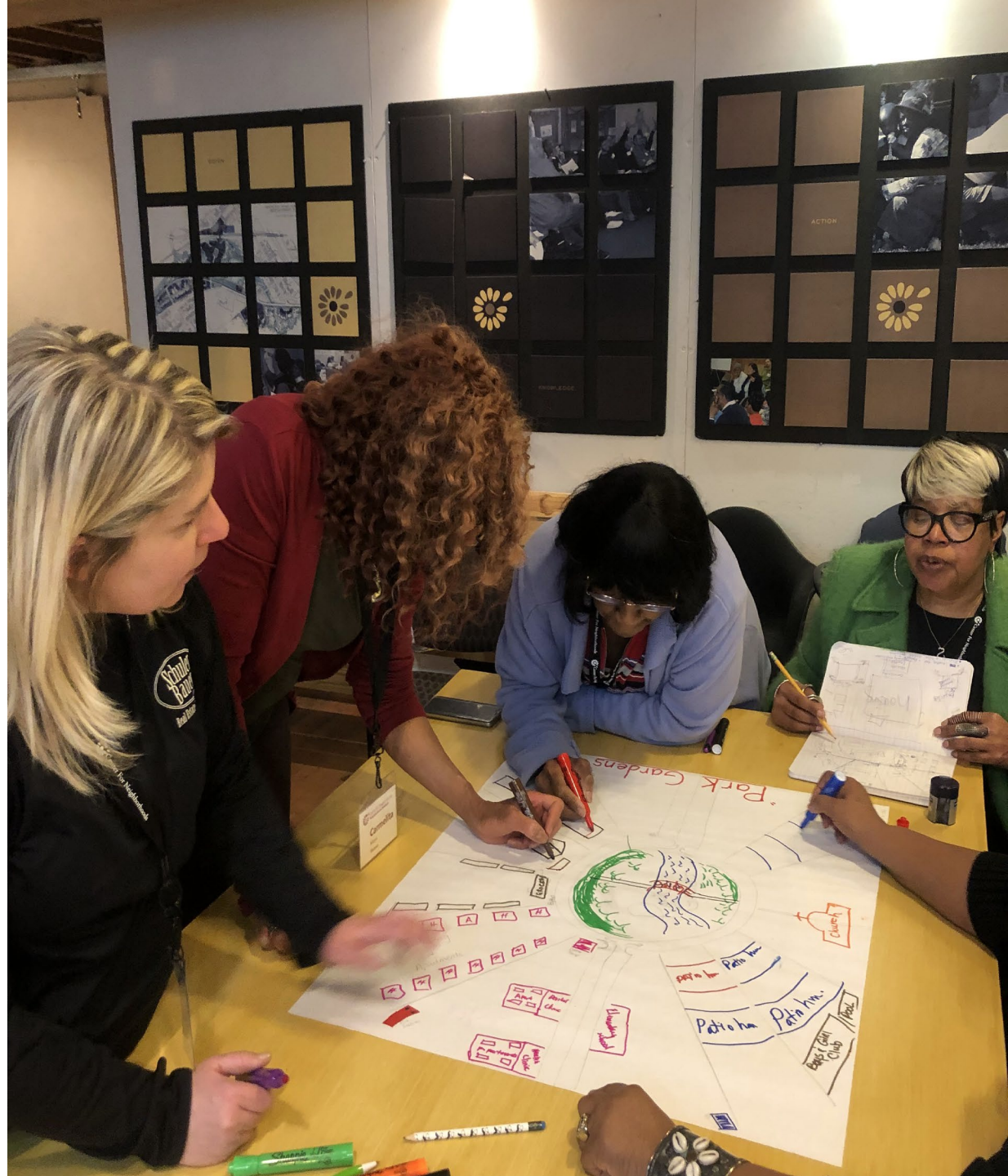


Center For Neighborhoods

VISION. KNOWLEDGE. ACTION.

Ideal Neighborhoods Exercise

- Purpose
- Timeframe
- Group
- Report out



Considering End Goals



What do you
want to
see/hear/feel at
the end?

What are you
hoping to
achieve?



Ideal Neighborhoods Exercise, continued...

- Give it a Name!
- Public Space
- Public Services
- Infrastructure
- Housing
- Transportation
- Amenities
- Recreation
- Aging and Younger Population

Add to Your Assessment Toolbox: Mapping as a Tool for Change



- 1) Identify neighborhood assets
- 2) Create a resource “catalogue” those assets
- 3) Build relationships with your neighbors as you map together!

Neighborhood Data & Mapping Resource Hub

<https://center-for-neighborhoods-neighborhood-resource-center-cfn.hub.arcgis.com/>

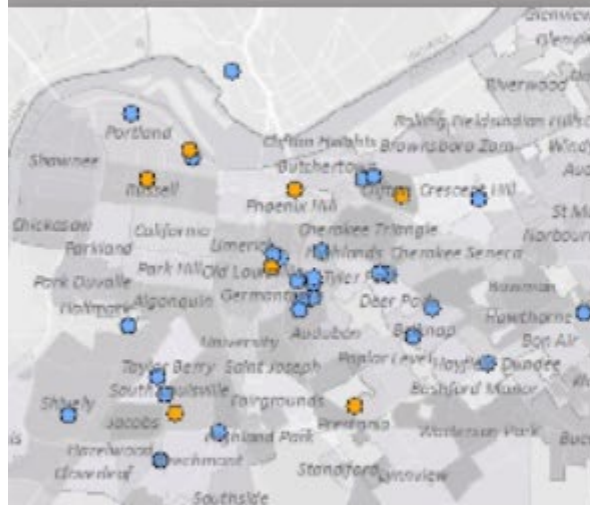


Neighborhood Mapping & Data Resource C...

More ▾



Interactive Maps:



Center for Neighborhoods NeighborMap

Louisville's Interactive NeighborMap:
Discover neighborhood assets and
resources, links to printable



Louisville Neighborhood Demographics, Select ACS 2016

Louisville Neighborhood Demographics,
Select ACS 2016 5 Year Estimates



500 Cities: Metro Louisville Health Outcomes

500 Cities Louisville, A Center for
Neighborhoods Story Map illustrating
major health outcomes in Louisville, KY

Next Week:

- Community Organizing
- Community Engagement
- Effective Media & Communication